

9.4

Choosing a Data Display

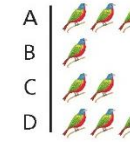
Key Idea

Data Display

What does it do?

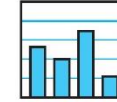
Pictograph

shows data using pictures



Bar Graph

shows data in specific categories



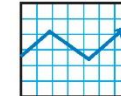
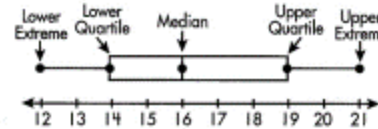
Circle Graph

A **box-and-whisker** plot displays data along a number line. Quartiles are used to divide the data into four equal parts. Each quartile is 25% of the number of items. The upper and lower quartiles, representing 50% of the data, form the box. The upper extreme (highest value) and lower extreme (lowest value) form the whiskers.



Line Graph

This box-and-whisker plot represents the following data:



Histogram

12, 13, 14, 14, 15, 16, 17, 18, 19, 19, 21

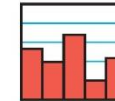
Upper Extreme: 21

Upper Quartile (median of upper half): 19

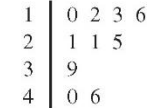
Lower Extreme: 12

Lower Quartile (median of lower half): 14

Middle Quartile (median): 16



Stem-and-leaf



Box-and-whisker plot



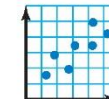
Dot Plot

shows the number of times each value occurs in a data set



Scatter Plot

shows the relationship between two data sets by using ordered pairs in a coordinate plane



On Your Own

Choose an appropriate data display for the situation. Explain your reasoning.

1. the population of the United States divided into age groups

2. the percents of students in your school who play basketball, football, soccer, or lacrosse

- - - -

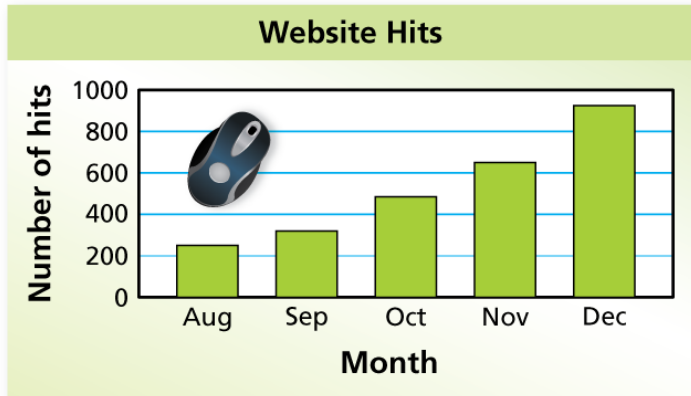
Example 2

You record the number of hits for your school's new website for 5 months. Tell whether the data display is appropriate for representing how the number of hits changed during the 5 months. Explain your reasoning.

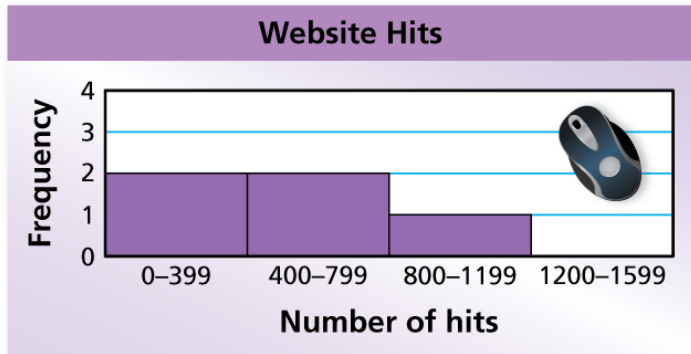


Month	Hits
August	250
September	320
October	485
November	650
December	925

a.



b.



Example 2

Cont.

c.



On Your Own

Tell whether the data display is appropriate for representing the data in Example 2. Explain your reasoning.

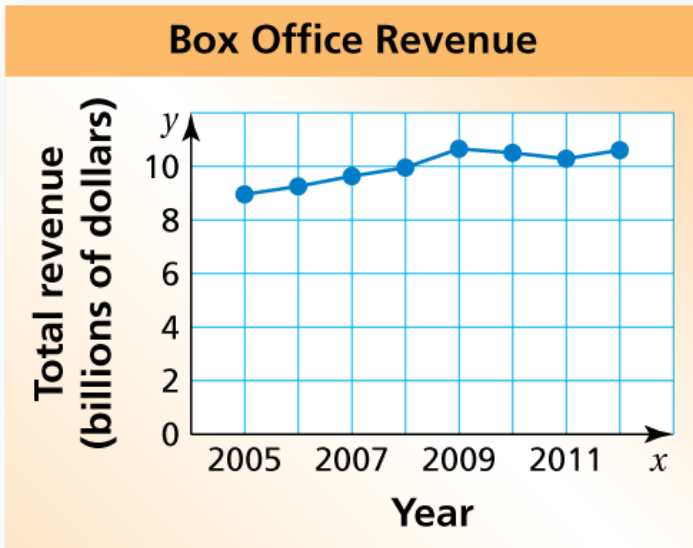
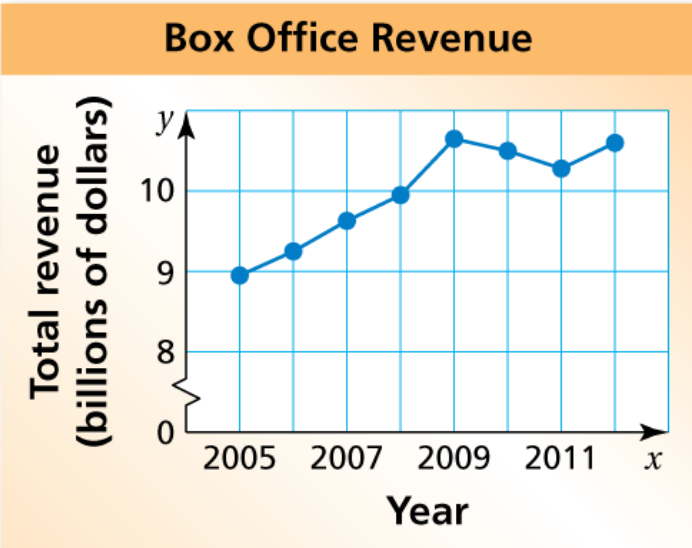
3. dot plot

4. circle graph

5. stem-and-leaf plot

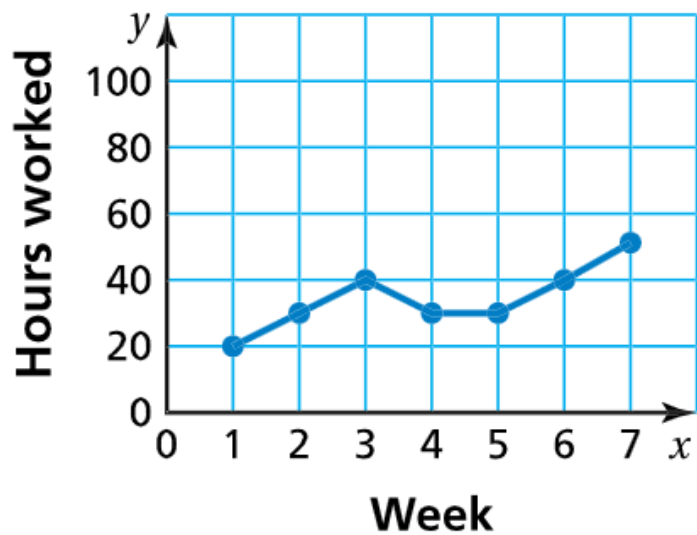
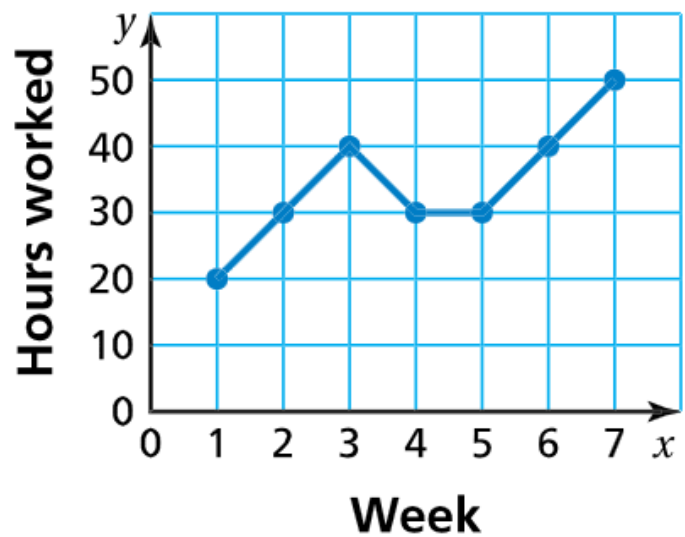
Example 3

Which line graph is misleading? Explain.



On Your Own




Which line graph is misleading? Explain.



Example 4

Food Drive Donation Totals



 = 20 cans  = 20 boxes  = 20 bottles

A volunteer concludes that the numbers of cans of food and boxes of food donated were about the same. Is this conclusion accurate? Explain.

On Your Own

Explain why the data display is misleading.

Favorite Pets

